



SAVING LIVES

*Floating Hospitals
Healthcare for All
Disaster Relief*



CLIMATE ADAPTATION

*Climate Resilience
Locally Led Adaptation
Mangrove Afforestation*



EMPOWERMENT

*Education & Gender Equity
Awareness of Rights, Ethics & Dignity
Access to Justice & Government Services*



POVERTY ALLEVIATION

*Capacity Building
Access to Services
Micro Entrepreneurship*



**Bridging the gaps in basic
services in the most vulnerable
and unaddressed areas:**

**from health to microfinance,
the journey of Friendship's
integrated approach.**



BANGLADESH – some key figures

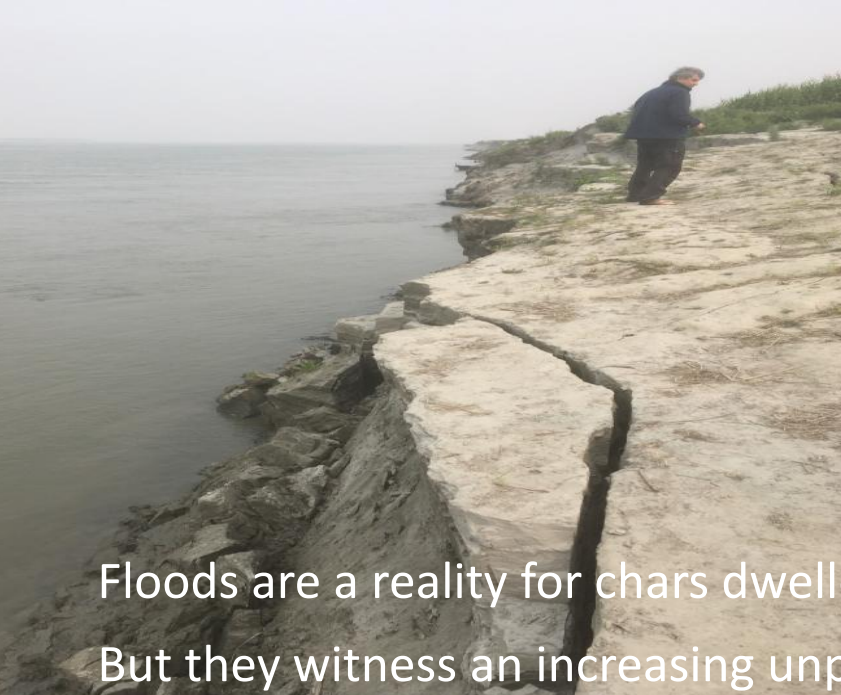
- ◉ Considered as a Least Developed Country
 - ◉ 47 million people live below the poverty line
- ◉ The most densely populated large country in the world
 - ◉ 147.570 km² (a territory representing ¼ of France or 4,5 X Belgium)
 - ◉ + 160M people (more than 2 times of France's population)
 - ◉ + 1000 pers. per km² (380 in Belgium)
- ◉ Low and flat lands prone to regular floods (North) and cyclones (South)
 - ◉ 6 meters average elevation from sea level
 - ◉ 40% of the country flooded every year
 - ◉ 67% of the population live in rural, disaster-prone areas

 Migration, damages, losses and increased vulnerability



The North of Bangladesh (the *Chars*)

- Chars are midstream islands created from river sediment.
- These islands are in a constant state of transformation and erosion.
- They are used as areas for settlement and cultivation and are an important resource in Bangladesh where land is scarce.




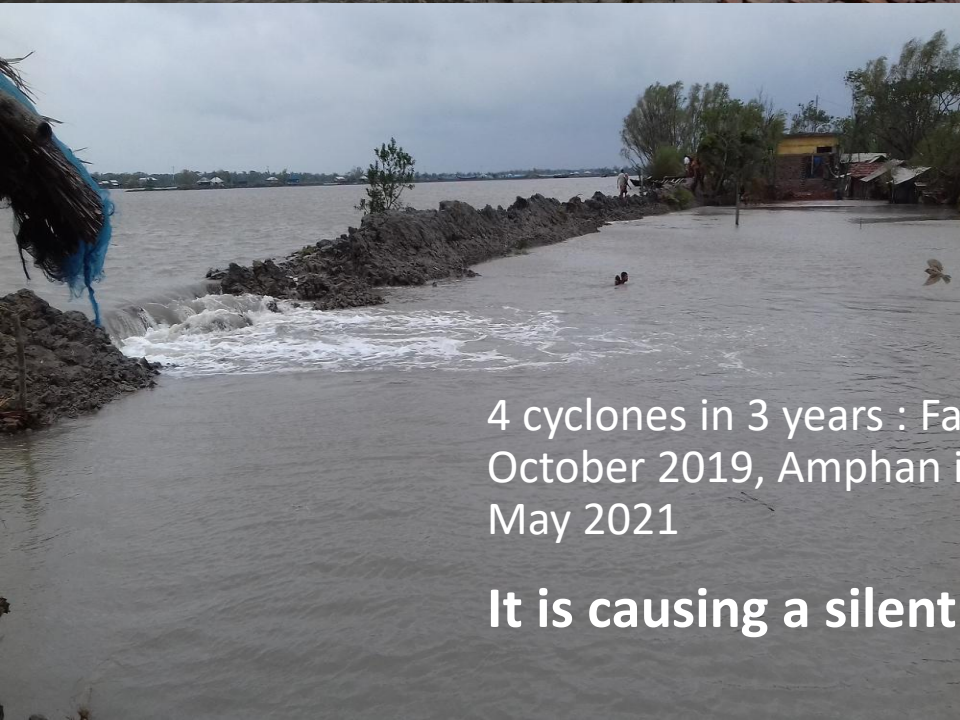
Floods are a reality for chars dwellers since many years.
But they witness an increasing unpredictability: more intense, sooner



and for a longer period

The South of Bangladesh (coastal belt)

- 
- Bay of Bengal: low lying region, polders.
 - Highly vulnerable to cyclones, storms => coastal erosion and salinization of cultivation soils.
 - Fragile infrastructures (embankments)
 - Poverty, population density => stress on resources
 - Limited economic opportunities
 - Lack of environmental awareness



4 cyclones in 3 years : Fani in May 2019, Bulbul in October 2019, Amphan in May 2020 and yaas in May 2021

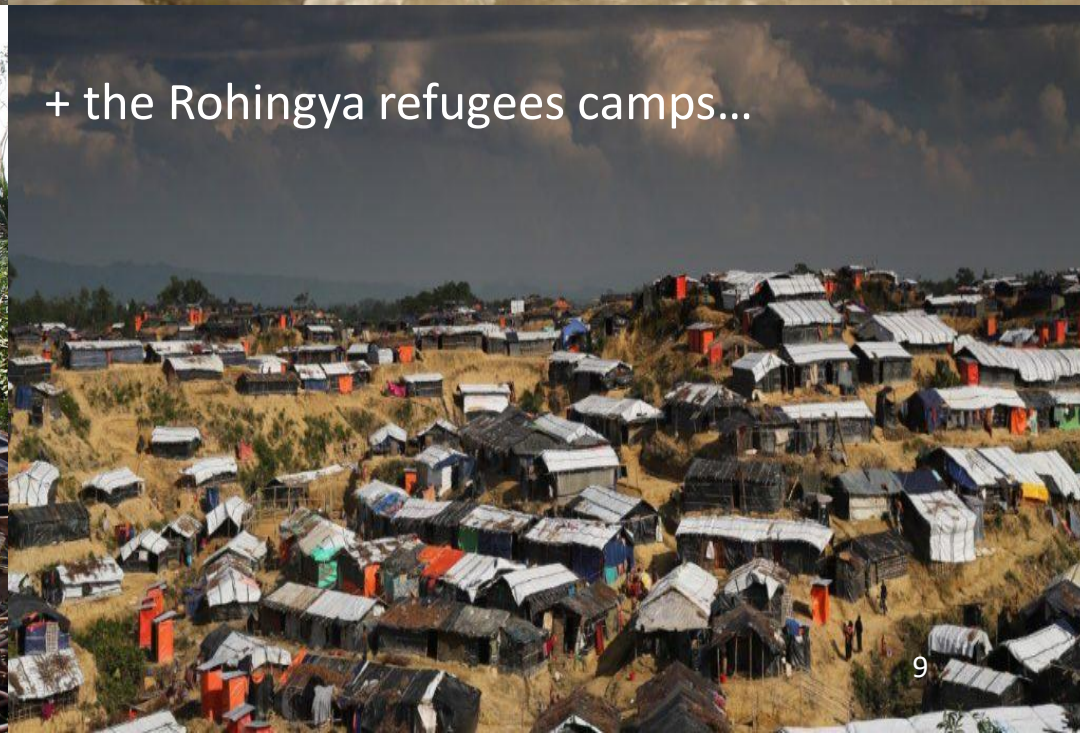
It is causing a silent disaster !!



In this very flat landscape, embankments are weak.
Cyclones are coming every year. The damages are huge.



FRIENDSHIP



+ the Rohingya refugees camps...

Realisation leads to responsibility & action

- ⊗ **What can be done in such a difficult setting?**
- ⊗ **What are the main conditions for development and human prosperity?**
 - Health → Food/livelihoods/incomes
 - Education → Empowerment/rights/freedom
 - Climate Adaptation (Integrated Adaptation)
- ⊗ These are the conditions for human communities to thrive. But the triple ecological crisis (climate, biodiversity and wastes) puts everything at stake and hence, things must be redefined.
- ⊗ Development is no longer a straight line with a clear horizon. It's about navigating in troubled waters and no longer working in silos.

Vision

Friendship is an international Social Purpose Organisation (SPO) guided by its vision of a world where people – especially the hard to reach and unaddressed – have equal opportunities to live with dignity and hope.

Mission



From Bangladesh, a country facing the most pressing of humanity's challenges, we develop scalable solutions to strengthen marginalized communities and empower people to transform their lives and reach their full potential.

Friendship Intervention Areas



Legend



Floating Hospital



Mainland Hospital



Emergency Relief



Regular Intervention Areas



Cyclone Shelter



Training Centre



Static Clinics

Vulnerable regions of Bangladesh



Most poverty afflicted areas



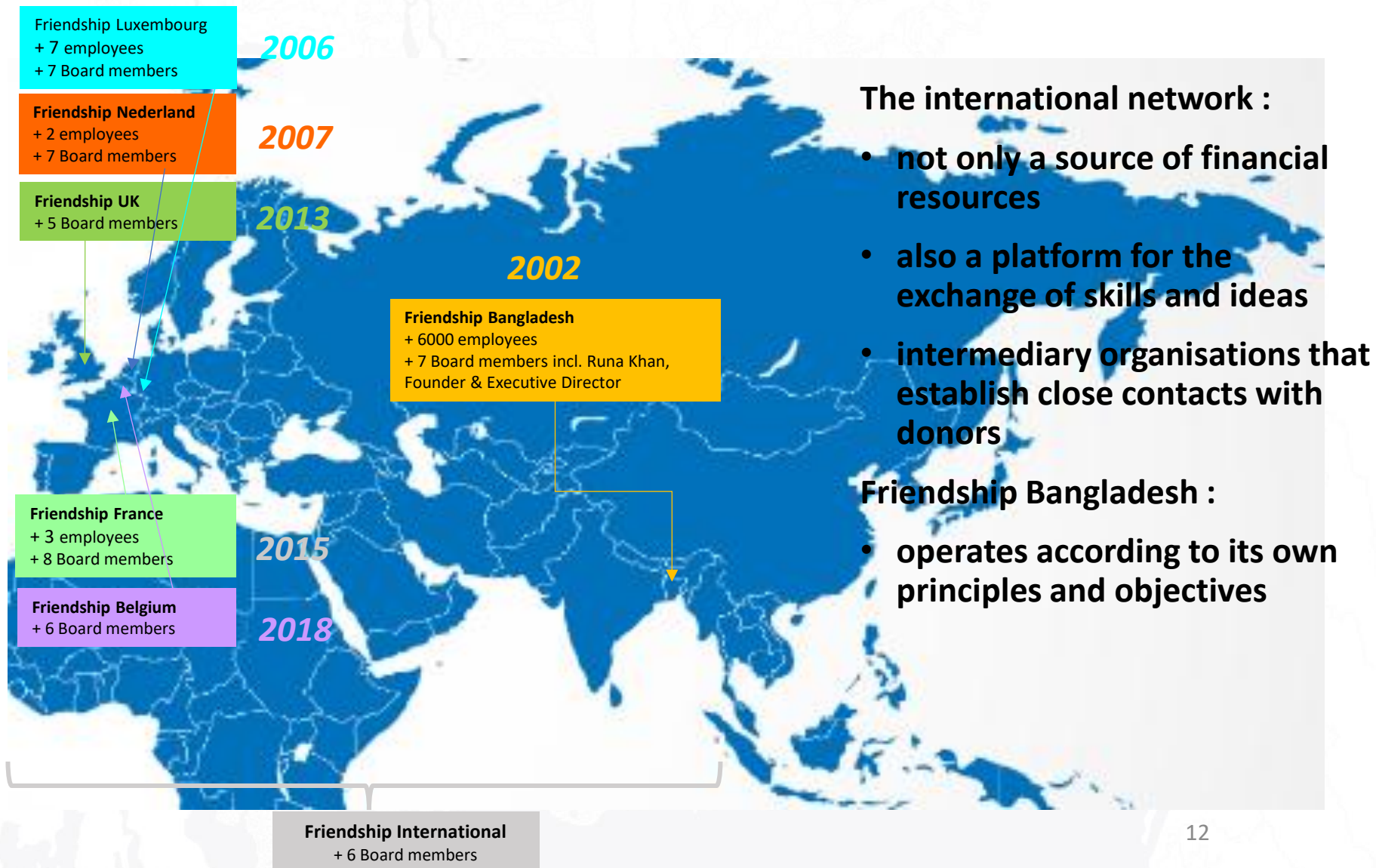
Most climate impacted areas



Most remote areas

Updated till Dec'25

Friendship International: South-North partnership



The international network :

- not only a source of financial resources
- also a platform for the exchange of skills and ideas
- intermediary organisations that establish close contacts with donors

Friendship Bangladesh :

- operates according to its own principles and objectives

Four Commitments of Friendship



HEALTHCARE
FOR ALL



FOOD RELIEF



WATER TREATMENT
PLANTS

SAVING LIVES

Floating Hospitals

Healthcare for All

Disaster Relief



RESCUE



DISASTER PLANNING
& PREVENTION



CYCLONE SHELTER
AND PLINTHS



ACCESS
TO JUSTICE



EDUCATION

EMPOWERMENT

Education & Gender Equity

Awareness of Rights, Ethics & Dignity

Access to Justice & Government Services



LEGAL
BOOTHs



AWARENESS OF RIGHTS
AND GOVERNMENT SERVICES



EMPOWERED ACTION
COMMITTEES



GENDER
EQUALITY



CLIMATE COMPATIBLE
RURAL HOUSING
GUIDELINE



SOLAR
POWER



CLIMATE-ADAPTIVE
FARMING

CLIMATE ADAPTATION

Climate Resilience

Locally Led Adaptation

Mangrove Afforestation



LOCALLY-LED
ADAPTATION



MANGROVE
REFORESTATION



SHELTER



FARMERS
COLLECTIVES



CAPACITY
BUILDING



TECHNICAL
ASSISTANCE

POVERTY ALLEVIATION

Capacity Building

Access to Services

Micro Entrepreneurship



ECONOMIC
OPPORTUNITY



ACCESS TO
MARKETS



MICRO-
ENTREPRENEURSHIP



ACCESS TO
SOCIAL SUPPORT
MECHANISMS

SAVING LIVES

 **FRIENDSHIP**



Hospital Ships (7)



Friendship Hospital Shyamnagar



Cyclone Shelter



Satellite Clinics



Friendship Community
Medic-Aides (FCM)



mHealth

Satellite clinics and FCMs create a bridge between the communities and the floating hospitals

POVERTY ALLEVIATION



Trainings on Agriculture, Cattle Rearing, Fishing,
Micro-Finance



Vocational Training for women & adolescent girls



Assistance to Fishermen



Assistance to Farmers



Solar Home Systems
+ Solar Micro-Grid

Transitional funding project / Resilience project = bridge between poverty alleviation and climate adaptation

EMPOWERMENT



Primary Schools



Secondary ICT-Aided Schools



Adult Literacy Learners

EMPOWERMENT



Legal Booths



Char & Uppukul Theatres



Billboards to raise awareness



Courtyard Sessions on Human Rights

CLIMATE ADAPTATION



These shifting islands, called “Chars”, are some of the most disaster and climate vulnerable locations in the country



Community Initiated Disaster Risk Reduction
= to build resilience & preparedness



Emergency Response

CLIMATE ADAPTATION



Community people helping in the dismantling of the school in July 2020



Solar panels dismantled by Para-Solar Technicians before the floods



Emergency Response: floating latrines

SDG Mapping of Our Commitments



SAVING LIVES



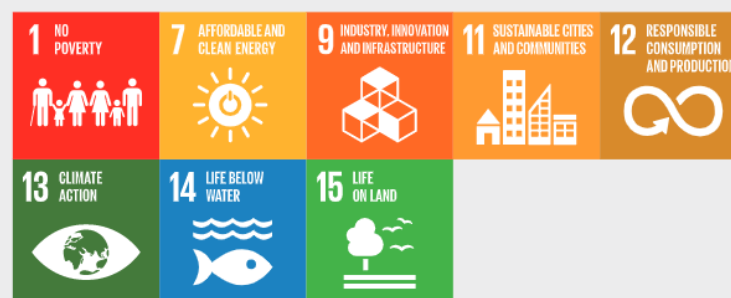
POVERTY ALLEVIATION



EMPOWERMENT



CLIMATE ADAPTATION



TIMELINE



2002	<ul style="list-style-type: none"> Lifebuoy Friendship Hospital 	
2003	<ul style="list-style-type: none"> Satellite Clinics Cultural Preservation 	
2004	<ul style="list-style-type: none"> National Flood Response First National Exhibition on Boats of Bengal (Bengal Gallery) 	
2005	<ul style="list-style-type: none"> National Exhibition: Boats of Bengal SED Agriculture Friendship International 	
2006	<ul style="list-style-type: none"> Friendship Community Medic-aides (FCMs) Primary Schools Received Rolex Award Friendship Luxembourg 	
2007	<ul style="list-style-type: none"> Cyclone Sidr Response Adult Literacy Centres Friendship Netherlands National Flood Response 	
2008	<ul style="list-style-type: none"> Emirates Friendship Hospital Plinth Flood shelter First International Exhibition of Boats of Bengal in (Paris) 	
2009	<ul style="list-style-type: none"> Cyclone Aila Response Solar Electrification 	

2010	<ul style="list-style-type: none"> Vocational Training Centre on Weaving and Tailoring International Exhibition on Boats of Bengal, Luxembourg SED Fishermen Friendship UK 	
2011	<ul style="list-style-type: none"> mHealth 1st Batch PSC SED Fishermen Liberation 	
2012	<ul style="list-style-type: none"> Friendship Centre Inclusive Citizenship Rongdhonu Friendship Hospital 10 Years of Friendship 	
2013	<ul style="list-style-type: none"> Static Clinics International Exhibition on Boats of Bengal, Japan Rehabilitation of Rana Plaza victims Water Treatment Plants 	
2014	<ul style="list-style-type: none"> Legal Information Booths and Paralegal Services Friendship Enterprise: Mushti (APDS) International Exhibition on Boats of Bengal, Luxembourg 	
2015	<ul style="list-style-type: none"> Char Theatre Community Initiated Disaster Risk Reduction, Flood Volunteer Junior Secondary Schools Friendship France 	
2016	<ul style="list-style-type: none"> Hatia Static Clinic Installation of Maritime VSATs in floating hospitals SATMED eHealth platform 	
2017	<ul style="list-style-type: none"> Rohingya Response 1st Batch JSC World Heritage Day Programme at Lalbagh Fort Upokul Theatre Transition Fund 	

2018	<ul style="list-style-type: none"> Friendship Enterprise: FHS Cyclone Shelter (Kuakata) Development of Shelter Guideline Rohingya Learning Centre Friendship Enterprise: Friendship Colours of the Chars 	
2019	<ul style="list-style-type: none"> Mangrove Afforestation High Schools Floating Latrine Colours of the Chars shop in Dhaka Friendship Belgium 	
2020	<ul style="list-style-type: none"> Covid Response Mongla Clinic Primary Healthcare Centre in Bhasan Char Career Guidance Cell Colours of the Chars pop-upshop in Luxembourg Person with Disability Centre 	
2021	<ul style="list-style-type: none"> Friendship Hospital Ukhiya Chalna Clinic Kutubdia Clinic 1st Batch SSC Online Legal Information & Help Desk First Solar Village 	
2022	<ul style="list-style-type: none"> 20 Years of Friendship Rebranding of EFH Digital Literacy at School Learning Centre in Bhasan Char Cyclone Resilient House Mobile Sports Library in Rohingya Response 	
2023	<ul style="list-style-type: none"> Second and Third Solar villages Disability Center and Boat IsDB Floating Hospital-1 HQAI Certification Solar Irrigation Pump 	
2024	<ul style="list-style-type: none"> Massive Flood Response IsDB Floating Hospital-4 Reconstruction of LFH IsDB Floating Hospital-3 	
2025	<ul style="list-style-type: none"> Winner of the Earthshot Prize IsDB Floating Hospital-5 	

FRIENDSHIP'S IMPACT AT A GLANCE



18M+ people have benefited from Friendship Health programme.



8.3M+ million person-days of emergency aid distributed.



330K+ people benefit from Inclusive Citizenship programme annually.



225K+ people have benefitted from Friendship's Sustainable Economic Development programme.

FRIENDSHIP AT A GLANCE



481k+ people have visited Friendship's exhibitions on the traditional boats of Bengal.



80K+ people have access to safe water from our 8 water desalination plants in coastal areas.



102K+ students have benefitted from Friendship Education programme.



7.8K+ employees of whom two thirds are from the communities served by Friendship.

HEALTH

Objective:

Friendship's Health sector established a three-tier healthcare system to enable access to healthcare for marginalised populations living in areas where people have limited access to vital health services, enacting the principle of universal access to healthcare with a commitment to saving lives.

Current Context:

- **Hospital Programme:**
 - 7 Floating Hospital Ships (LFH, EFH, KAAP-MHB 1,2,3,4,5)
 - 2 Land Hospitals: Friendship Hospital Shyamnagar (FHS) and Friendship Hospital Ukhiya (FHU)
- **Outreach Programme:**
 - 2 Static Clinics
 - 545 Satellite Clinics per month
 - 690 Friendship Community Medic-Aides (FCM)
 - 34 Community Skilled Birth Attendants (CSBA)
 - 304 Immunisation sessions per month with Govt.
 - 2 Cervical Cancer Screening Centres

FRIENDSHIP
HEALTH

24M+ Services Provided



Key Components:

3-Tier Healthcare Model, Floating Hospital, Land Hospital, Static Clinic, Satellite Clinic, FCM, CSBA, Immunization, Nutrition, Cervical Cancer Screening, One Sustainable Health, IsDB, mHealth, etc.

CLIMATE ACTION

Objective:

Friendship's Climate Action sector saves lives through scalable locally-led adaptation practices to protect people and their assets, provide shelter and relief when disasters strike, and to enable communities to be resilient in the face of climate change.

Current Context:

- Mangrove afforestation:
 - 227 Hectares of mangrove trees planted
 - 687,000 mangrove saplings planted
- Community Initiated Disaster Risk Reduction (CIDRR) Coastal Project: Alternative livelihood building and capacity building coastal communities
- 8 Cyclone Resilient Homes constructed in disaster-prone coastal areas
- 4,810 flood volunteers trained in first aid, rescue, and disaster response
- 72 Tube Well Mechanics providing access to clean water
- 8 Water Treatment Plants serving 80,000+ salinity-affected population
- 27 plinths raised cluster villages providing shelter to flood-affected people

FRIENDSHIP
CLIMATE ACTION

525K+ Beneficiaries Served



Key Components:

Climate Adaptation, Ecosystem-based Adaptation, Mangrove Plantation, Building Resilience, CIDRR, Flood Volunteer, Emergency Response, Cyclone Resilient House, Cyclone Shelter, ASD, etc.

SUSTAINABLE ECONOMIC DEVELOPMENT

Objective:

Friendship's Sustainable Economic Development sector aims to help vulnerable communities achieve economic and financial development by facilitating capacity development, innovation, technical assistance and access to markets, thereby enhancing income generation and employment opportunities.

Current Context:

- Agriculture Project:
 - 535 Friendship Farmers Clubs (FFC) having 13,317 members
 - 287 Animal Health Workers (Para Vet)
 - Climate-smart agricultural interventions in 361 chars
- Fishermen Project:
 - 235 Friendship Farmers Club (FFC) having 5,850 members
- Renewable Energy Project:
 - 3 solar villages, 1 mini solar village
 - 114 SED Hub
 - 47 solar irrigation pumps
 - 3,662 home solar systems
 - 803 Para Solar Technicians
 - 7 weaving, dying, and printing centres,
 - 3 tailoring centres, and
 - 1 embroidery centre

FRIENDSHIP
SUSTAINABLE ECONOMIC
DEVELOPMENT

225K+ Beneficiaries Served



Key Components:

Agriculture, Fisherman, Solar Village, Solar Irrigation Pump, Para-solar Technician, Vocational Training Centre, Farmer's Club, SED-Hub, One Sustainable Health, Animal Health Worker, ASD, etc.

EDUCATION

Objective:

Friendship's Education sector aims to strengthen marginalised communities through quality education by nurturing the essential attributes of dignity and self-confidence and providing opportunity, dignity, and hope for a better life.

Current Context:

- 6,283 current students in 109 schools (44 Primary Schools, 16 Secondary Schools, and 49 Adult Learning Centres)
- 11 French schools, 1 Swiss school, 1 Belgian school, 6 Luxembourg schools, and 16 Friendship Schools in Bangladesh have academic exchange activities through the Inter School Connectivity Programme (ISCP)
- The Digital Literacy and Connectivity and Climate Resilience Programme (DCCP) provides basic computer literacy training and climate advocacy training among Friendship 16 secondary school students
- SWOPNER THIKANA project: Runs 8 schools in the South
- 882 students and alumni received CGC support for higher education, skills training, jobs, and leadership activities.

FRIENDSHIP
EDUCATION

101K+ Beneficiaries Served



Key Components:

Primary Education,
Secondary Education,
Adult Learning Centre,
Career Guidance Cell,
Inter-school Connectivity
Programme, DDCP,
Shopner Thikana, etc.

INCLUSIVE CITIZENSHIP

Objective:

Friendship's Inclusive Citizenship sector aims to give marginalised people in remote areas a voice, educate them about their constitutional and legal rights, and connect them to vital government services and the justice system.

Current Context:

- Good Governance:
 - 95 Friendship Legal Information Booths:
 - 2 Online legal booths and Helpdesks
 - 11 Legal and General information booths
 - 82 Legal Information booths
 - 1,564 Early Marriage preventions
- Friendship Disability Inclusive Development programme (FDIDP):
 - 4 Sub districts
 - Interventions in 50 chars
 - 3,526 disabled persons served
 - 1077 Children with disabled served
 - 2 Physiotherapy Centres
 - 2 Disability Friendly Boat
- KPMG-FRIENDSHIP Integrated Project (FIP) & FICA:
 - 3,000 beneficiaries received integrated support
- ASD Project (Assistance for Sustainable Development)
 - Intervention in 30 chars

FRIENDSHIP
INCLUSIVE CITIZENSHIP

330K+ Beneficiaries Served



Key Components:

Good Governance,
Paralegal, Legal Booth,
Legal Information
Centre, Disability
Inclusion,
Physiotherapy Centre,
Char Theater,
Friendship Integrated
Programme (FIP), FICA,
ASD, etc.

CULTURAL PRESERVATION

Objective:

Friendship's Cultural Preservation sector has been preserving Bangladesh's 3,000-year-old heritage of wooden river boats for more than 20 years through documentation, exhibitions, hand-crafted miniature boat replicas and boat tourism.

Current Context:

- 20 local and international exhibitions on the Boats of Bengal
- 87 different types of model boats built
- 11 carpenters supported
- Developed a textbook on Cultural Preservation and used in Friendship schools

FRIENDSHIP
CULTURAL
PRESERVATION

481K+ Visitors in Boat Exhibitions



What can we learn from Bangladesh?

- a country where the notion of risk has remained very present (as opposed to “developed” thermo-industrial countries) because it happens **NOW!**
 - used to cope with few resources and work with what they have
=> triggers innovation
 - a country still rural and living on agricultural practices
 - local knowledge and know-how is still valued and used
 - they developed **adaptation strategies** because there were no other options, by necessity, or by trial and error (learning by doing)
- => it's on this fertile ground that Friendship has developed its integrated climate adaptation model.

Friendship's approach to bridge the gaps



- Put the focus on local needs
- Increase participation of local people with the local government
- Bring women and youth to the center of the local development and empower them to new grassroots level leadership and knowledge
- Use simple organizational tools to make all stakeholders come together
- Strengthen trust between stakeholders in a common agreed vision, with strong **VALUES**
- Have a bottom-up approach

FRIENDSHIP ENTERPRISES



Friendship Hospital Shyamnagar

Shyamnagar Friendship Hospital (FHS) is a community focused land hospital launched in April 2018 by the Friendship, situated in a climate-vulnerable region in Shyamnagar upazila of Satkhira district in Bangladesh. FHS provides general consultation, dental care, eye care, cervical cancer screening and testing, physiotherapy, gynecological and obstetric care, specialised surgeries, pathology, radiology and imaging services, pharmacy, 24-hours emergency services, etc.

- 310K+ health services were delivered to 180K+ patients
- 2,400+ surgeries were conducted with support from 80+ national & international medical teams
- 2600+ women screened through Cervical Cancer See & Treat (CCS&T) programme among them 44 women were treated
- The Friendship Hospital Shyamnagar, winner of the prestigious RIBA International Prize for the best building in the world in 2021.



FRIENDSHIP ENTERPRISES



Colours of the Chars

- A social enterprise which markets goods produced in an ethical manner by women in the char communities
- Products are made using traditional techniques of weaving, dyeing, printing and embroidery
- All colours used are natural dye and azo free chemicals
- Colours of the Chars is one of the very few organizations to produce natural indigo in Bangladesh
- 2 Production Centre (Chilmari and Haluaghat)
- 2 Outlets in Dhaka and 1 shop in Luxembourg



FRIENDSHIP ENTERPRISES

APDS (MUSHTI)

- Mushti is a non-profitable organisation under the affiliation of the Ministry of Social Welfare.
- Providing social and financial solutions to unemployed or low-income individuals for their livelihood improvement.
- Follows Friendship's model of risk sharing, savings, and lease financing.
- Mushti has:
 - 850+ groups
 - 9,000+ members
 - 7,100+ borrowers
 - Presence in 426 chars/villages



Background of APDS



Association for People's Development Stream (APDS) started in 1999 as NGO registered under the ministry of social welfare. It receives microfinance license in 2018 from Micro Credit Regulatory Authority (MRA). The organization is also being registered with NGO Affairs Bureau. The organization is currently undertaking active initiatives to extend its scope and reach. Microfinance through group loans is the core business of APDS. The mission is to improve the quality of life of the poor through appropriate quality economic development programs, skill development programs and various social programs. The operation is being operated mainly manually with a loan and savings software to capture loan and savings data. In its course of business, it took a microfinance (popularly known as MUSHTI) portfolio of FRIENDSHIP, a Bangladeshi NGO, who did some pilot projects on financial products in char lands of Bangladesh. Considering the huge potentials to grow as a unique MFI focusing most disadvantaged area of Bangladesh, it developed number of innovative financial products including savings and insurance.

There are 14 branches of APDS & located in 5 different districts (Kurigram, Gaibandha, Mymensingh, Potuakhali and Sathkhira) which are amongst the poorest in the country. These areas are extremely vulnerable: geographically, economically, and socially. The members of APDS are people from the chars (vulnerable erosion-prone riverine lands) and they are amidst the most marginalized within the area. People in this region face triple handicaps, i.e., floods, an agricultural lean season, and cold waves.

APDS: financial data



General information of APDS as of December 2025	
Country of the institution	Bangladesh
Name of the institution	Association for Peoples Development Stream (APDS)
Type of institution	MFI
Date of creation	1999
Point of contact (name, position, email)	Md. Mozammel Huq, CEO mozammelapds@friendship.ngo
Local currency	Bangladeshi Taka (BDT)
Number of employees	66
Number of points of service (branches, outlets, etc.)	14 branches
Number of members	9,246
Number of borrowers	7,223
Number of groups	901
Total loan portfolio (Local currency / EUR)	206.15 M BDT / 1.42 M EUR
% PAR 30 as of 12/2025	6.58%
Total deposit portfolio (Local currency / EUR)	52.36 M BDT / 361 k EUR

Impact of APDS activities on the communities



- ◉ APDS is providing microfinance services to the poor people to bring economical change in their life under flood prone & Char areas where other MFI are not serving.
- ◉ Feedback of the ultra poor beneficiaries is very positive as they can receive small loans for their small business, without collateral.
- ◉ APDS has designed the loan product as per the demand of the clients, i.e. with weekly or monthly & seasonal payments, which is very convenient for them.
- ◉ APDS encourages the clients to deposit savings which are refundable.
- ◉ APDS provides general loans, sanitation loans, education loans & eco-loans to the clients.
- ◉ Aside of Microfinance services, APDS is providing micro insurance services to the clients with the partnership SCBF.

Technical and financial support from Luxembourg



- ◉ ADA supported the development of ADPS's business plan (technical capacity)
- ◉ ADA-FIT has disbursed the loan amounting of USD 400,000 through Commercial Bank of Ceylon (CBC) to activate its BP (financial capacity)
- ◉ Partnership with IBISA and Green Delta Insurance for cattle-based and crop-based insurances.
- ◉ Under the Business Partnership Facility (BPF), partnership with IBISA.
- ◉ Dairy Heat Index Insurance 'In collaboration with IBISA, Swiss Capacity Building Facility (SCBF) and Green Delta Insurance PLC.
 - ◉ Started in May 2025 completed in August 2025.
 - ◉ First-ever Dairy Heat Index Claim Settlement in Bangladesh.
 - ◉ Boosted APDS's insurance portfolio, and scopes for further collaborations.

From development to prosperity: what could be the future in Bangladesh?

- ◉ Microfinance could be seen as the end of the development journey, but it is rather a continuation, opening space for new partnerships and innovative investment opportunities from Luxembourg and beyond.
- ◉ HERON Project with LIST and RSS Hydro for disaster preparedness
- ◉ Future possible sources of funding:
 - ◉ Carbon credits
 - ◉ Biodiversity restoration / nature credits
- ◉ Impact finance ? How to expand from donation-based model to mixed funding model or blended finance? SED can be a use case to invest in real economy:
 - ◉ SED Hubs for Youth Entrepreneurship
 - ◉ Climate Smart Agriculture (with solar-powered irrigation pumps) and agroecology
 - ◉ Solar Villages (micro-grids)
 - ◉ Nature positive economy

Conclusion

With the climate crisis, it is our relationship with nature and the way we live on this planet that is at stake. The climate and biodiversity crisis raise profound questions about our human civilisation and how it should develop and thrive.

We can no longer consider the development of societies to be independent of climate and ecological issues. We need a cross-cutting approach because all aspects of a society are affected by the climate crisis and need to be tackled simultaneously, be it health, food production and nutrition, income generation, education, rights, gender inclusion, etc.

This what Friendship tackles since 23 years from the bottom up in what we now call **Friendship Integrated Climate Adaptation (FICA)** approach.

AWARDS AND RECOGNITION



The Aga Khan Award
Friendship Centre



Green award
Solar energy access to
disadvantaged areas



RIBA
Royal Institute of
British Architects
Best new building
In the world 2021



Award
Of Excellence for Handicrafts
Products of Friendship's
vocational training centers



Social Innovation
Leadership Award World
CSR Congress



Islamic Development Bank
Award
Women in development



Preserving the ancient boat-
building heritage of Bangladesh



Social Entrepreneurship Award



SCWEC Women Entrepreneur
Excellence Awards



Superbrands Bangladesh Award
2022-2023 (NGO Category)



CHS Certified by HQAI

**THE
EARTHSOT
PRIZE**

**Winner
2025**

• **Climate**

Friendship: Winner of The Earthshot Prize 2025 in the “Fix our Climate” Category



Friendship won the Earthshot Prize, the first Bangladeshi organisation to do so, in the "Fix Our Climate category" in 2025 for its Integrated Climate Adaptation Model.

This award, founded by HRH Prince William, recognised Friendship’s holistic, nature-based, and locally led solutions, including floating hospitals, dismantlable schools, renewable energy, and community empowerment, thereby sustainably supporting climate-impacted communities.





THANK YOU



FRIENDSHIP



Thank you for
your attention !

